

El Corazón Art Park 2026

A Community-Centered Art Park in the Heart of Los Angeles
Sports • Recreation • Art • Wellness

April 2, 2026

Vision Statement

Everybody has a heart. *Todas y todos tenemos un corazón.*
As major sports and cultural events come to Los Angeles, we will create a unique art experience for everyone, putting our City's "heart" on the international map.

Launched with AltaMed's singular commitment to art, healing, and community...

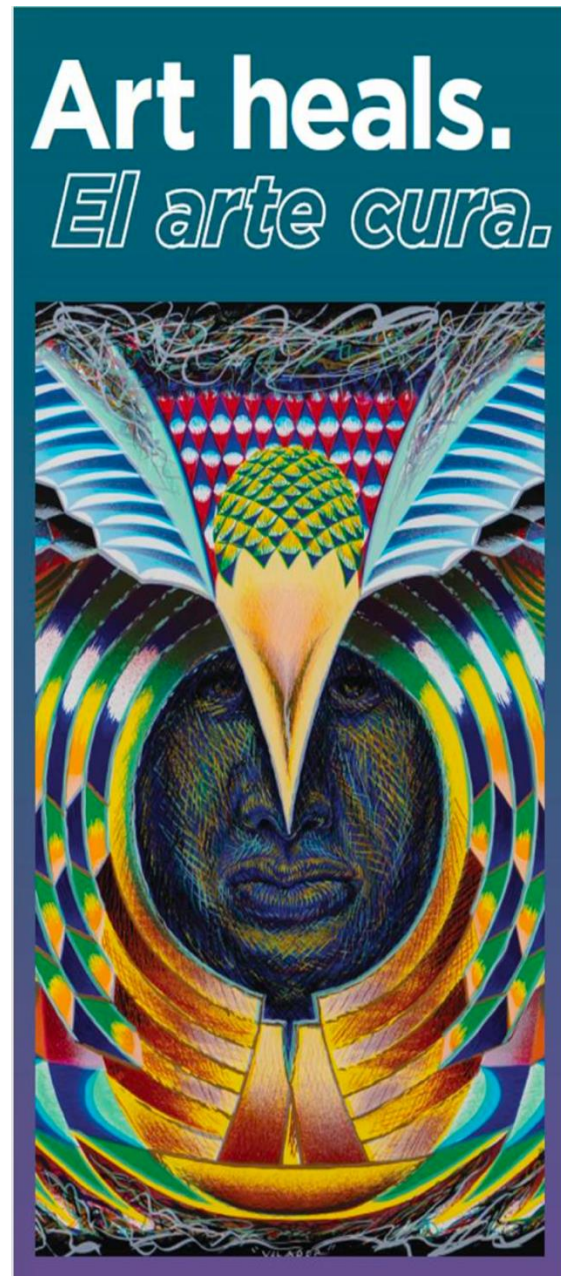
Culture, creativity, sports, and wellness unite...

Creating a communal heartbeat that echoes for generations to come.



What is *El Corazón Art Park*?

- An approved Recreation and Parks community project that provides health, wellness, sports, and cultural programming in a multi-use space. This project includes green-scaping suitable for outdoor sports and recreation activities; cultural immersion opportunities; and a community gathering hub, all accessible to the public.
- This community-centered art park reflects AltaMed's decades-long commitment integrating culture into community health and healing throughout Los Angeles.

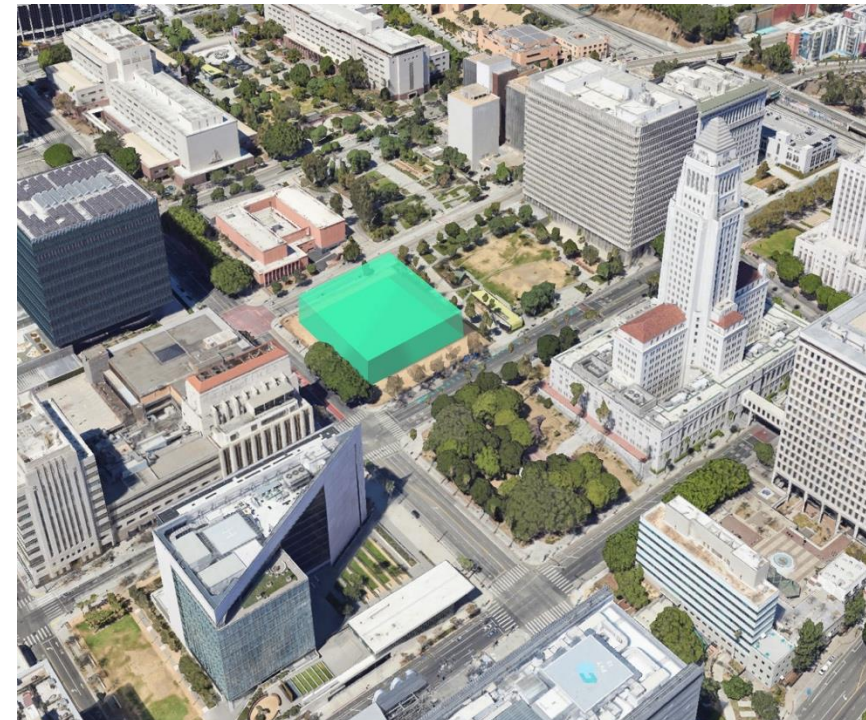
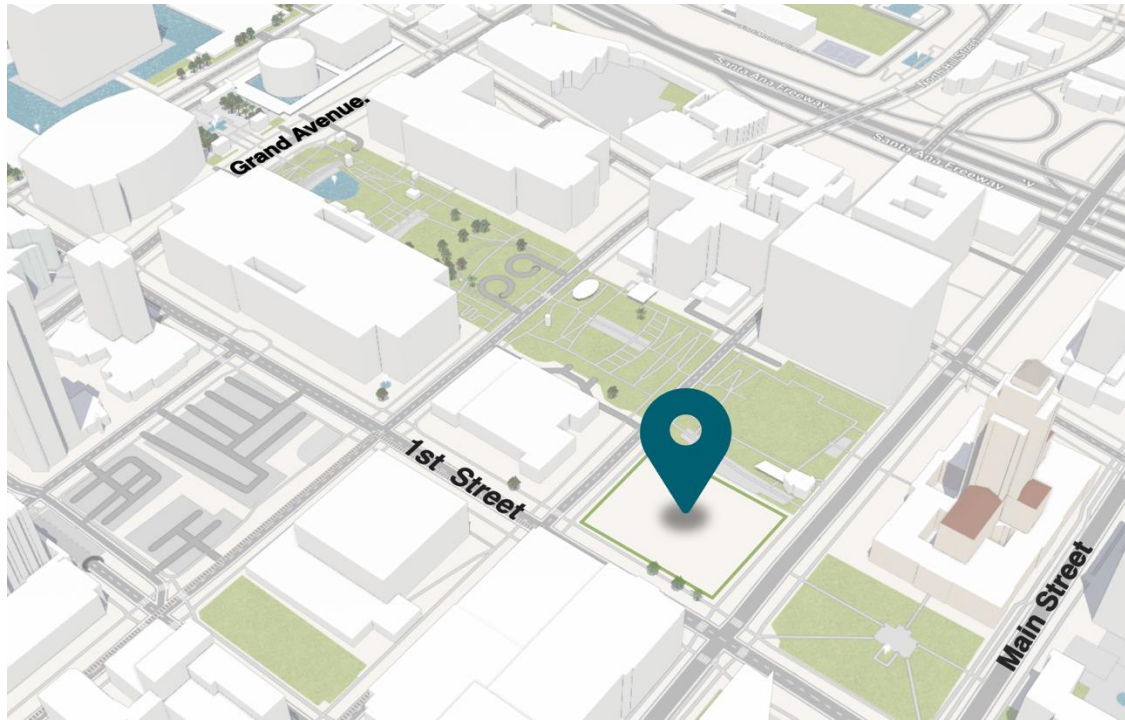


What is *El Corazón Art Park*

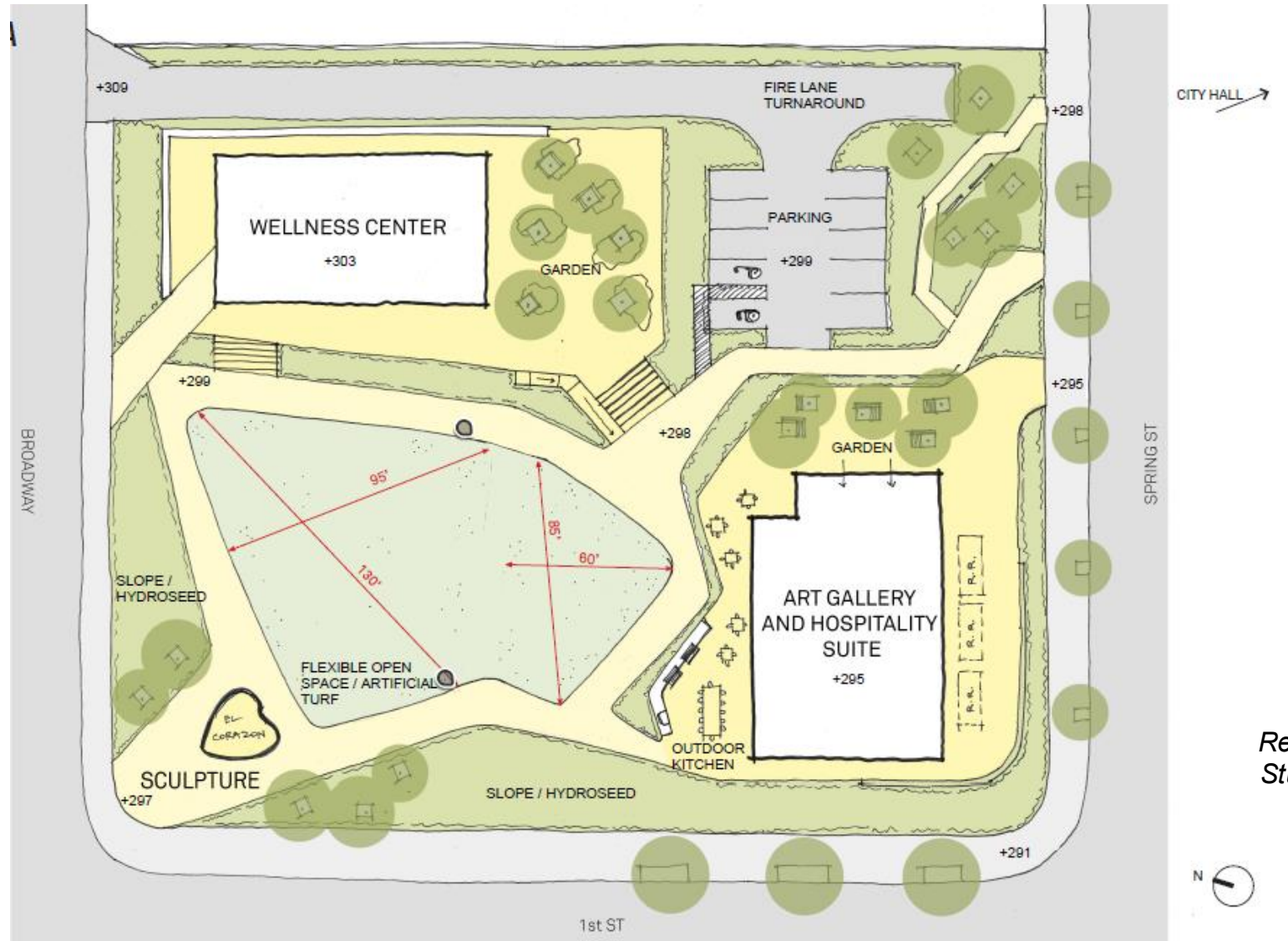
- **A Community Gathering Space.** An outdoor gathering space integrating youth sports programming, wellness activations, healing, art, and culture.
- **Connecting Through Culture.** From exhibitions of international artists together with local Los Angeles art, to commissioned works of art: *El Corazón Art Park* centers community and invites use of this space for healing, wellness, and movement.
- Picture an environment, featuring public sculptures, installations and performances, video projections, an art gallery with exhibitions, and community arts programming for both recreation and creative experiences.

What is *El Corazón Art Park*?

- Located in Civic Center, Downtown
- Owned by City of Los Angeles / Department of Recreation and Parks
- Adjacent to Grand Park and City Hall
- One block from L.A. Metro Station

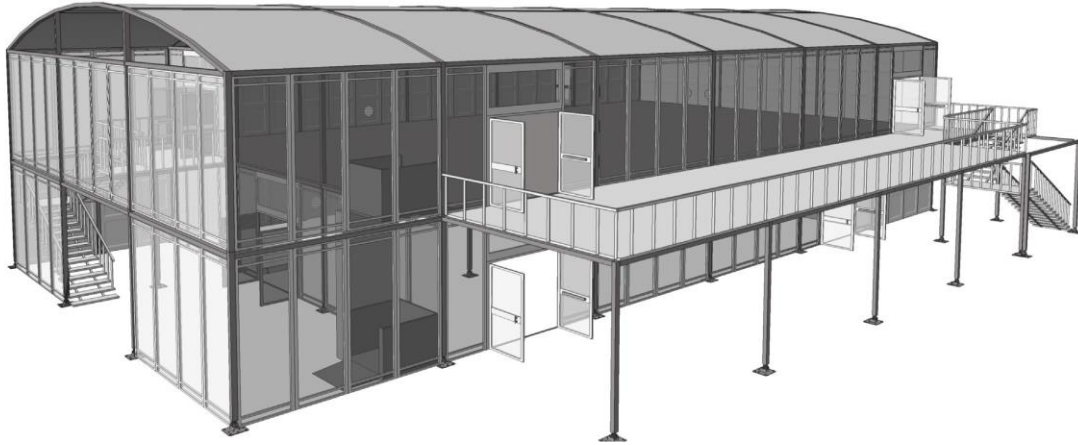


What is *El Corazón* Art Park?



Renderings Provided by
Studio MLA, Mia Lehrer

What is *El Corazón* Art Park?



Wellness at *El Corazón* Art Park



Wayne Alaniz Healy
Incomplete Pass, 2004
Monoprint
AltaMed Art Collection



El Corazón Art Park



- **Always staffed. Always welcoming.** On-site personnel will welcome members of the community: 1 facility manager, 1 Wellness Center staff member, 1 Art Gallery staff member, with personnel having dual language (English and Spanish) capabilities.
- **Maintaining a shared space.** AltaMed will take responsibility for maintaining, cleaning, landscaping, staffing the space, and security to ensure it remains a welcoming place for for the community—be it local businesses, DTLA residents, visitors from throughout L.A. or international visitors here to enjoy a world class sporting event.

El Corazón Art Park

- **Open to the public.** Thursday through Sunday, 10AM–5PM. El Corazón Art Park will be fully ADA compliant, ensuring accessible pathways, facilities, and programming for individuals of all abilities.
- **Security is a priority.** 24/7 on-site security, with a minimum of two security guards securing the space overnight, and three guards when open to the public. The park will be fully fenced-in and the general public may access the park during operating hours.
- **Serving the City.** All activities are aligned with a City-approved agreement, focusing on wellness and culture in connection with recreational activities.
- **Community-centered programming.** Supporting physical activity, mental wellbeing, and youth engagement.
- **Shared use.** A space designed to encourage visibility, participation—creating a welcoming environment that is well-utilized by the community & responsibly managed.

Why AltaMed?

- AltaMed is a trusted member of the community with its origins in East Los Angeles and the Chicano Civil Rights Movement.
- AltaMed has uplifted artists from throughout Los Angeles, as well as internationally renowned artists, with a collection of over 4,000 works of art.
- One of the most important collections of Chicano, Latino art in the world.



Why AltaMed?

- With the summer 2026 FIFA World Cup in Los Angeles, we see this as an opportunity to support the community in exploring the cultural connections between wellness, communal green spaces, sports and movement, and art.



Ana Serrano
Narco Soccer, 2013
Serigraph, Ed. 24/32
AltaMed Art Collection



Frank Romero
Corazon de Aztlan, 2004
Serigraph, Ed. 1/10
AltaMed Art Collection

THANK YOU!